

EQUIP TYPE ~~R390A/6FR~~ EXP. NO.

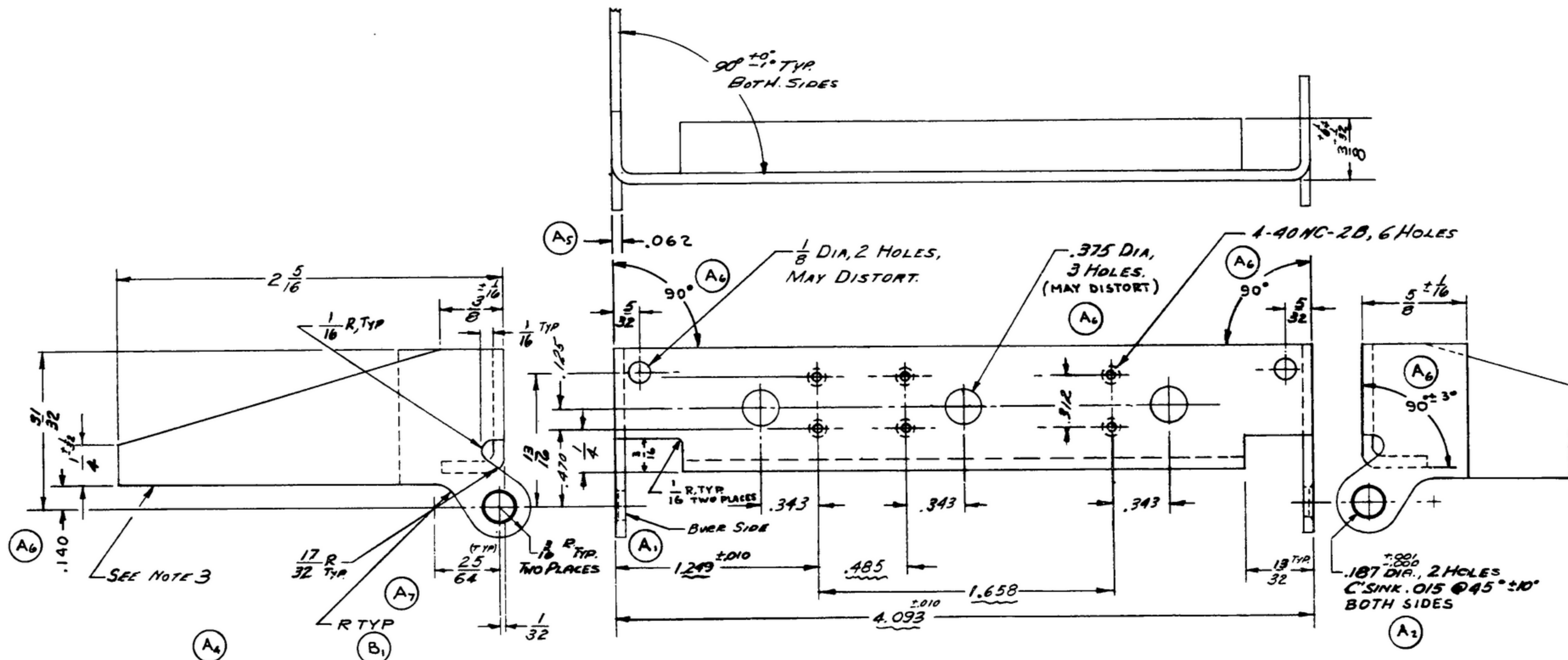
COL. 540-7881-003

NOTICE: WHEN GOVERNMENT DRAWINGS, SPECIFICATIONS, OR OTHER DATA ARE USED FOR ANY PURPOSE OTHER THAN IN CONNECTION WITH A DEFINITELY RELATED GOVERNMENT PROCUREMENT OPERATION, THE UNITED STATES GOVERNMENT THEREBY INCURS NO RESPONSIBILITY NOR ANY OBLIGATION WHATSOEVER, AND THE FACT THAT THE GOVERNMENT MAY HAVE FURNISHED, PURCHASED, OR IN ANY WAY SUPPLIED THE SAID DRAWINGS, SPECIFICATIONS, OR OTHER DATA IS NOT TO BE REGARDED BY REPLICATION OR OTHERWISE AS AN IMPLIED WARRANTY OF MERCHANTABILITY OR FITNESS FOR ANY PARTICULAR PURPOSE, OR AS AN ASSURANCE OF MERCHANTABILITY, USE, OR AS A PATENTED INVENTION THAT MAY IN ANY WAY BE RELATED THEREBY.

THIS DOCUMENT HAS BEEN PURCHASED BY THE GOVERNMENT AND MAY BE REPRODUCED AND USED IN CONNECTION WITH ANY GOVERNMENT PROCUREMENT OR BANTERCHANGE OPERATION.

*FOR INFORMATION ONLY. CONTRACTOR MAY AT HIS OPTION DEVIATE FROM THESE PROCESS DETAILS.

SWE APPROVAL		REVISIONS			
SYM	PR10042-B	SYM	DESCRIPTION	DATE	APPROVAL
		A7	A1 ADDED 3/16 RADIUS A2 ADDED NOTATION "BOTH SIDES" A3 ADDED APPL SM-C-343632 A4 COMP 301 WAS 302 A5 ADDED THK DIM TO VIEW A6 ADDED DIM. 140, NOTATION "MAY DISTORT" & ANGLE DIM A7 REMOVED .140R	27 OCT 59	42428-PC 59-A1-S1 REV'D PME
B1	CA84751	B1	B1 MATERIAL 302 COND. ANNEALED WAS 301 COND 1/2 HARD	22 APRIL 60	42428-PC 59- REV'D PME



CRCS, COMP 302, COND ANNEALED, PER SPEC MIL-S-5059

FINISH: E300 PER SPEC MIL-F-19072

*COLLINS 580-002500

NOTES:

1. ALL RELIEF RADII 1/16 MAXIMUM.
2. 1/16 MAXIMUM INSIDE BEND RADII.
3. NOTED SURFACE TO BE FLAT WITHIN .005 T.I.R.
4. ALL SHARP CORNERS MAY HAVE 3/32 MAX R - OPTIONAL.
5. ALL SCREW THREADS PER BUREAU OF STANDARDS HANDBOOK H28.

COLLINS PART NO.	ITEM	QTY	PART NO.	DESCRIPTION	UNIT	UNIT SPEC
LIST OF MATERIAL						
COLLINS PART NO. 558-0426-003						

DRAWN R.E.B.		CHECKED [Signature]		APPROVED		-COLLINS-RADIO-50- -SPEC-RANGE-1000- 14214-PH-51-99		DEPARTMENT OF THE ARMY SIGNAL CORPS ENGINEERING LABORATORIES FORT MONMOUTH NEW JERSEY	
UNLESS OTHERWISE SPECIFIED: DECIMAL DIMENSIONS INCLUDING HOLE SIZES MAY VARY ±.008 FRACTIONAL DIMENSIONS INCLUDING HOLE SIZES MAY VARY ±1/64 MACHINED ANGLES MAY VARY ±.1° SHEARED ANGLES MAY VARY ±.25° BROKEN ANGLES MAY VARY ±.1° ECCENTRICITY BETWEEN ANY DIAMETERS ON THE SAME CENTERLINE SHALL NOT EXCEED .010 TOTAL INDICATOR READING. ALL DIMENSIONS ARE FINISH DIMENSIONS INCLUDING APPLIED FINISH AND ARE GIVEN IN INCHES.		SIGNAL CORPS		REVIEWED PME		RACK-HIGH			
558-041003-1		SM-C-249060 SC DL-248775		APPROVED HLY PME		DATE 30 DEC '55		SCALE 2/1	
APPLICATION		SM-C-249075							